

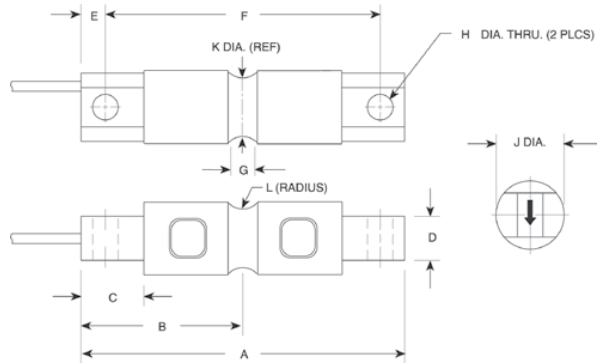
LOAD CELLS



RL7000 SS Double-Ended Beam, Stainless Steel, NTEP 1:5000 Class III/1:10,000 III L Multiple Cell, IP67



Picture is a representation of actual product



SPECIFICATIONS

Full Scale Output:
3.0 mV/V

Output Resistance:
700 ohms, +/- 9

Input Resistance:
880 ohms, +/- 80

Material/Finish:
Stainless steel

Temperature:
Compensated range
0°F to 150°F/-18°C to 65°C

Safe Overload:
150% Full scale

Safe Sideload:
100% Full scale

Rated Excitation:
10V AC/DC (15V max)

Non-repeatability:
0.02% Full scale

Combined Error:
0.1% Full scale

Insulation Resistance:
5000 megohms

Deflection at Capacity:

- 5000 lb=.02 in/.5 mm,
- 10,000 lb=.025 in/.6 mm,
- 20,000 lb=.042 in/1.1 mm,
- 30,000-50,000 lb=.02 in/.5 mm,
- 60,000 lb=.025 in/.6 mm,
- 100,000-150,000 lb=.02 in/.5 mm

Seal Type:
Environmentally sealed, IP67

Cable Length:
18.6'/6 m (5K - 20K)
30'/10 m (30K - 150K)

Cable Color Code:

- Red.....+ Excitation
- Black.....- Excitation
- Green.....+ Signal
- White.....- Signal
- Orange.....Shield

Warranty:
Two-year limited warranty



DIMENSIONS

RATED CAPACITY	A	B	C	D	E	F	G	H	J	K	L
lb/inches											
5000-10,000	8.12	4.06	1.44	1.12	.62	6.88	.62	.66	1.70	1.48	.50
20,000	8.12	4.06	1.44	1.12	.62	6.88	.84	.66	1.95	1.48	.50
30,000-60,000	10.25	5.12	1.88	2.37	.88	8.50	1.00	1.06	3.20	2.73	1.00
100,000	11.25	5.62	1.88	2.50	.88	9.50	1.00	1.06	3.50	3.24	1.50
150,000	11.25	5.62	1.88	2.80	.88	9.50	1.25	1.06	3.90	3.64	1.50
kg/mm											
2268.0-4535.9	206.3	103.1	36.6	28.5	15.8	174.8	15.8	16.8	43.2	37.6	12.7
9071.9	206.3	103.1	36.6	14.2	15.8	174.8	21.3	16.8	49.5	37.6	12.7
13,607.8-27,215.6	260.4	130.1	47.8	60.2	22.4	215.9	25.4	26.9	81.3	69.3	25.4
45,359.4	285.8	142.8	47.8	63.5	22.4	241.3	25.4	26.9	88.9	82.3	38.1
68,038.8	285.8	142.8	47.8	71.1	22.4	241.3	31.8	26.9	99.1	92.5	38.1

ORDER INFORMATION

LOAD RATING	PART #	PRICE
***5000 lb (2268.0 kg)	30431	Consult
10,000 lb (4535.9 kg)	30432	Consult
20,000 lb (9071.9 kg)	30433	Consult
30,000 lb (13,607.8 kg)	30434	Consult
40,000 lb (18,143.7 kg)	30435	Consult
50,000 lb (22,679.6 kg)	30436	Consult
60,000 lb (27,215.5 kg)	30437	Consult
100,000 lb (45,359.2 kg)	30444	Consult
***150,000 lb (68,038.9 kg)	30445	Consult
Conduit Adapter Kit*(must be factory installed to maintain warranty)		
3/8-24 to 1/4-18 NPT	31534*	Consult
5/8-18 UNF / 1/2-14 NPT	31535**	Consult

***Non-NTEP

INTERCHANGEABLE PRODUCTS

MANUFACTURER	MODEL	PAGE #
Rice Lake Weighing Systems	RL71000HE	30
VPG Revere Transducers	9103	277
Artech®	SS70210	—

* On capacities of 5000 to 20,000 lb, order part #31534

** On capacities of 30,000 to 150,000 lb, order part #31535

WEIGH MODULE AVAILABLE

MANUFACTURER	MODEL	PAGE #
Rice Lake Weighing Systems	EZ Mount 1	78



RICE LAKE WEIGHING SYSTEMS

